



MANAR

TOOLS PVT. LTD.

AN ISO 9001 : 2015 CERTIFIED COMPANY



PCD/CBN CHIP BREAKER TECHNOLOGY

MANUFACTURING FACILITY

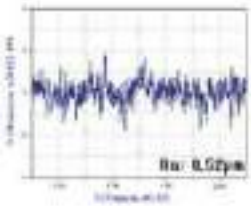


TESTING FACILITY

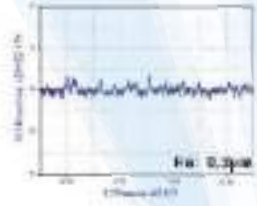


CHIP BREAKER INSERTS

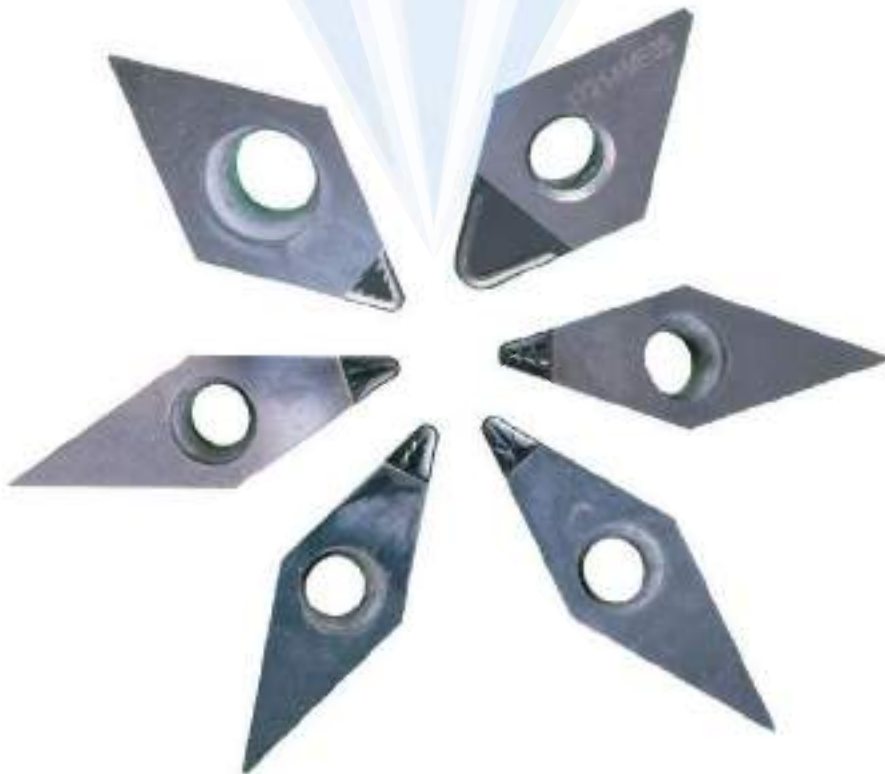
Without Chip Breaker



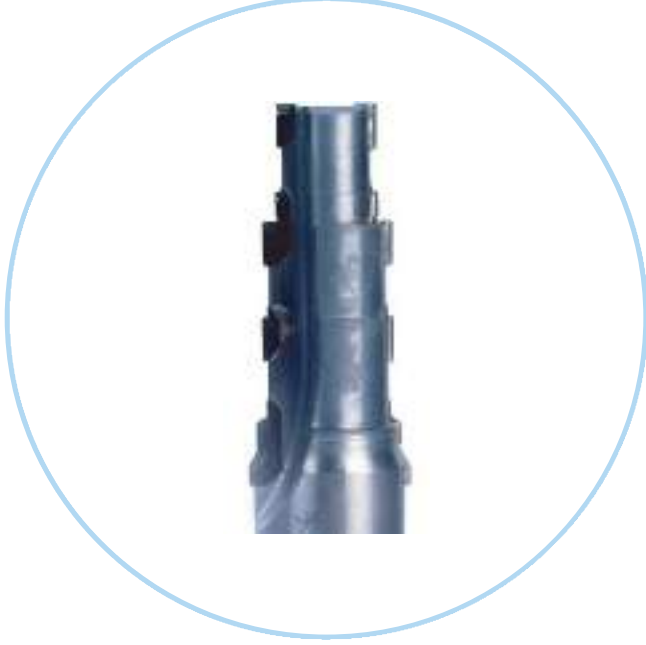
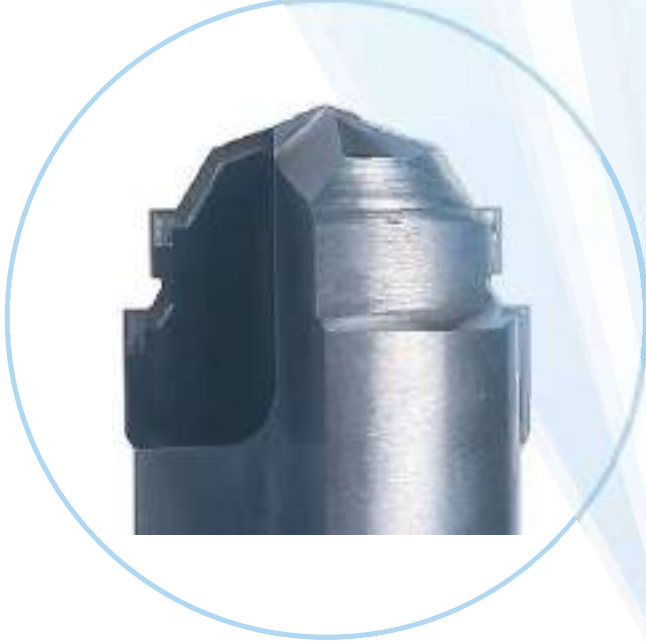
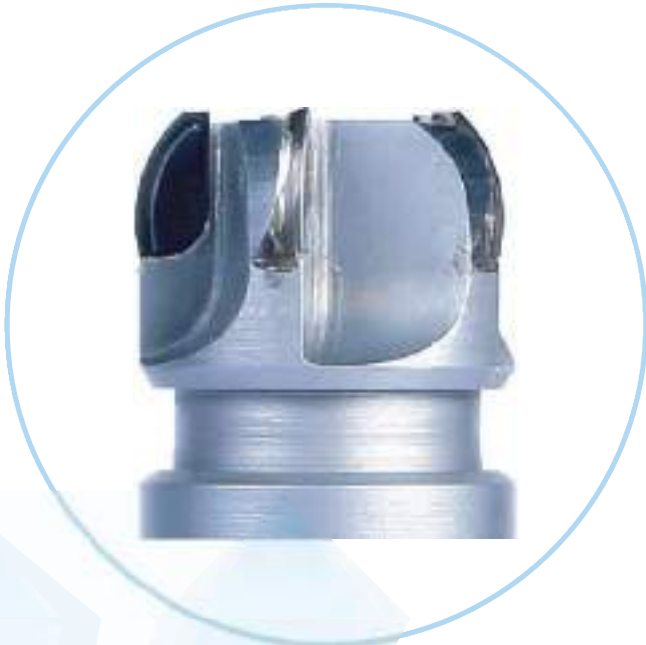
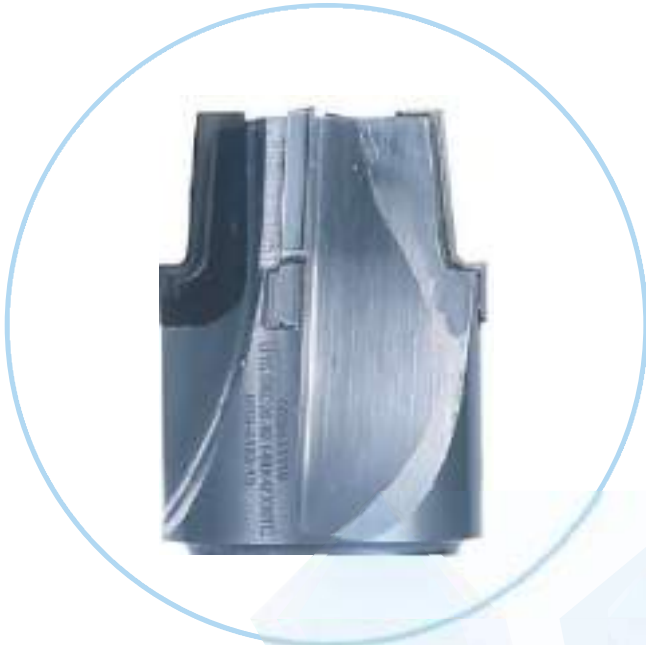
With Chip Breaker



Chip Breaker Models



CHIP BREAKER REAMERS

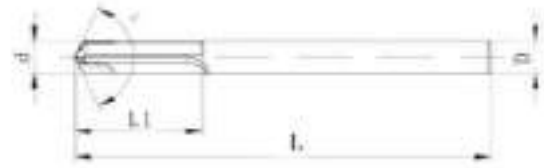


PCD REAMERS (COMBINATION TYPE)

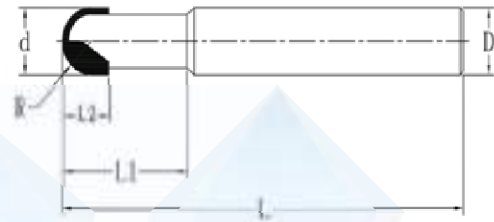


PCD REAMERS (PLAIN TYPE)

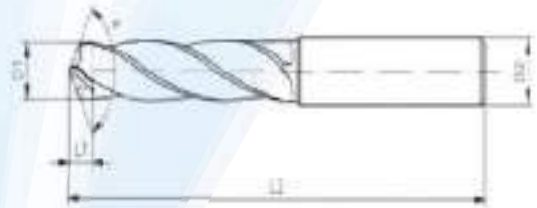
PCD Straight Shank Burnishing Drill cum Reamer



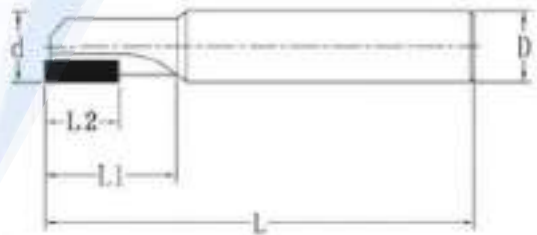
PCD Ball End Mill



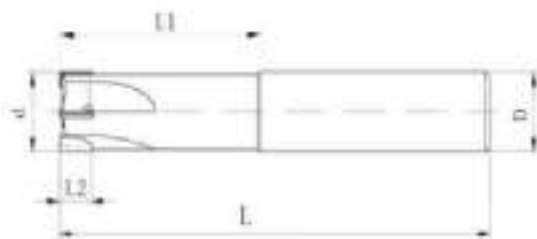
PCD Twist Drill/ Helical Drill



PCD End Mill

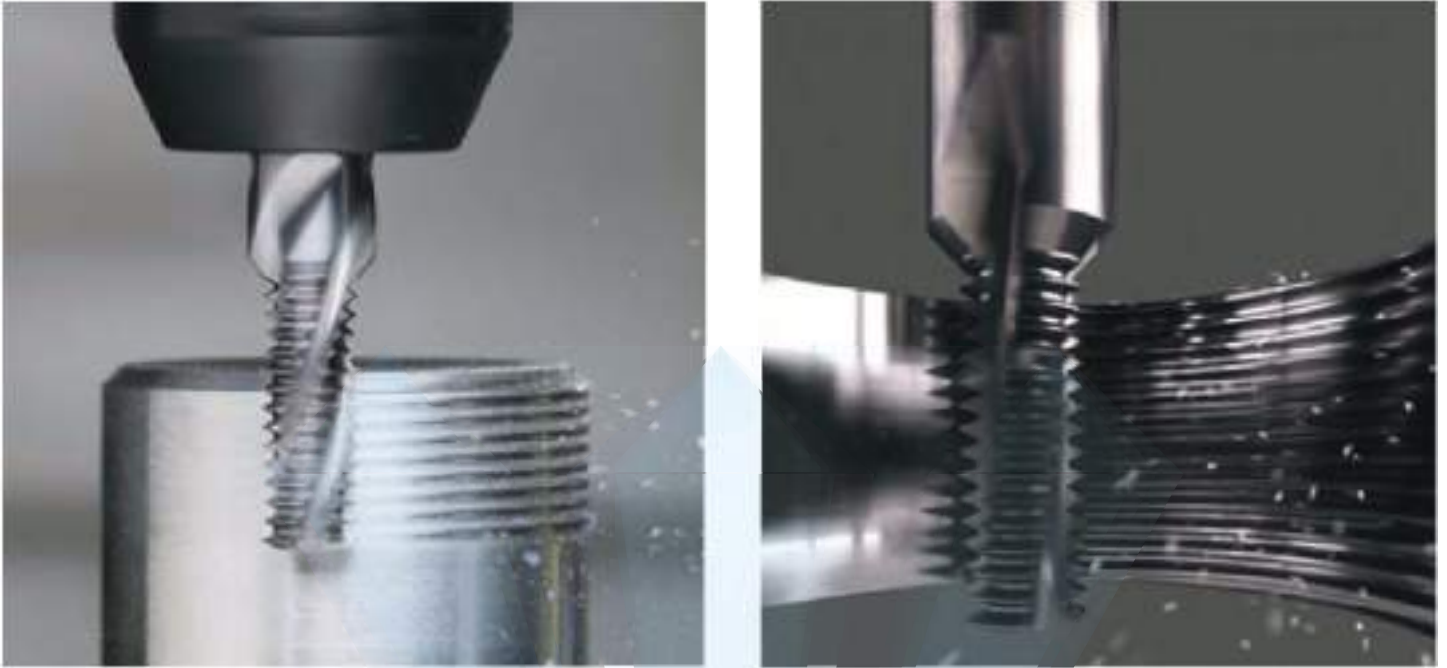


PCD Straight Shank Reamer



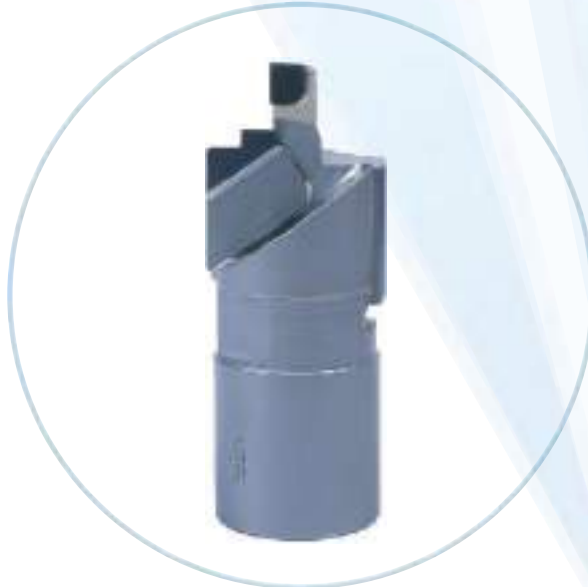
SPECIAL THREAD MILL CUTTERS

Generally PCD (Poly Crystalline Diamond) Tools are known for their great hardness and high abrasion resistance and are particularly used for the machining of Non-Ferrous material such as Aluminium, Copper, Magnesium and Plastic Fibre, etc. To increase the process capabilities and same is used as helical interpolation ways



We are manufacturing Standard and customized thread mill cutters as per customer requirements/drawings.



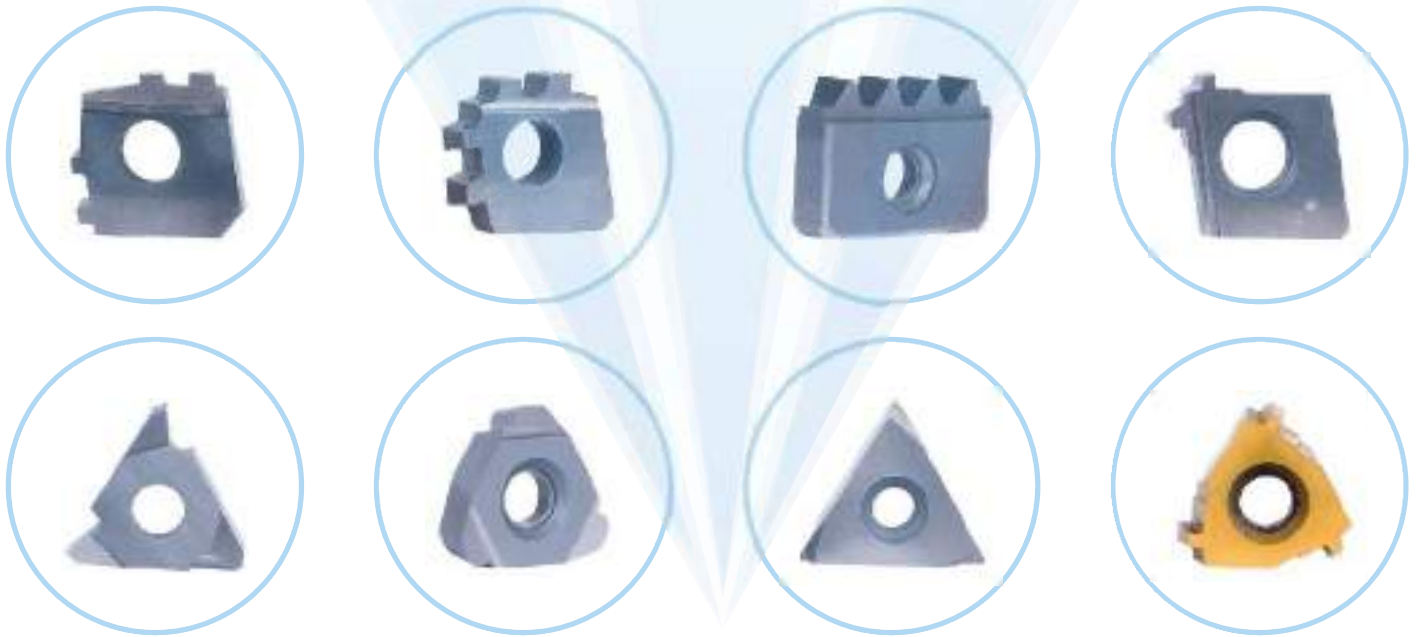


GROOVING TOOLS

GROOVING BLADES



GROOVING INSERTS



VSR BITES



COMPAX SHOES

Considering high volume of bearing case machining on grinding machine requires very low wear resistance for support shoes. These shoes are specifically made with PCD blanks.



JEWELLERY TOOLS

We are specialise in the production of various diamond tools including posalux diamond tools, flywheel diamond tools, chain cutting tools, chain faceting tools, CNC diamond tools and background tools with high quality and high precision. The tool point material is natural diamond, MCD single crystal, CVD, PCD, Carbide and other super hard materials.



| | | |
|---|--|--|
| 0 SHAPE 10° IN 10° SIZE 3.0x3.0x3.0 MM | FLAT GRINDING SIZE 3.0 x 3.0 | GRINDING WITH CONCAVE SHOULDER SIZE 3.0 x 3.0 |
| FLAT 10° SIZE 3.0x3.0x3.0 MM | FLAT SHANK GRINDING SIZE 3.0 x 3.0 | GRINDING WITH A CONCAVE SIZE 3.0 x 3.0 |
| 0 SHAP 140° - 150° - 160° SIZE 1.0, 2.0, 3.0, 4.0 MM | FLAT 0° GRINDING SIZE 3.0 x 3.0 | GRINDING WITH SHOULDER FLAT 0° SIZE 3.0 x 3.0 MM |
| CONCAVE SIZE 3.0 x 3.0 x 3.0 MM | CUT GRINDING SHOULDER SIZE 3.0 x 3.0 | GRINDING AND FLAT SIZE 3.0 x 3.0 MM |
| CONCAVE SIZE 3.0 x 3.0 x 3.0 MM | FLAT GRINDING SIZE 3.0 x 3.0 x 3.0 MM | GRINDING AND GRINDING SIZE 3.0 x 3.0 x 3.0 MM |
| X CONCAVE SIZE 3.0 x 3.0 x 3.0 MM | FLAT 0° CONCAVE SIZE 3.0 x 3.0 x 3.0 MM | PERFECTLY FLAT GRINDING SIZE 3.0 x 3.0 x 3.0 MM |
| SHANK CONCAVE SIZE 3.0 x 3.0 x 3.0 MM | 0° FLAT GRINDING SIZE 3.0 x 3.0 x 3.0 MM | PERFECTLY BALL SIZE 3.0 x 3.0 x 3.0 MM |
| 0° GRINDING SIZE 3.0 x 3.0 x 3.0 MM | GRINDING HORIZONTAL SIZE 3.0 x 3.0 x 3.0 MM | PERFECTLY GRINDING SIZE 3.0 x 3.0 x 3.0 MM |



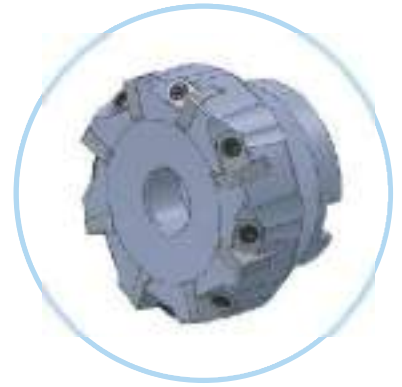
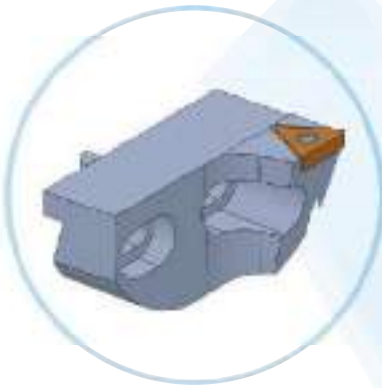
Chain Faceting Tools

Mini chain Tools

INDEXABLE TOOLS

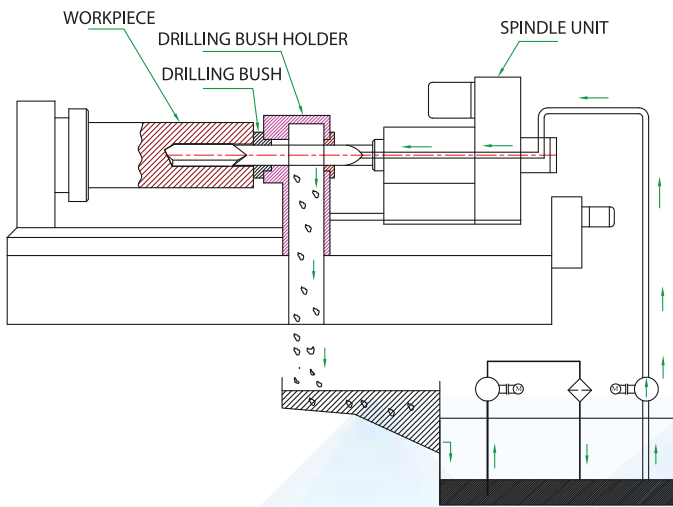


INDEXABLE TOOLS



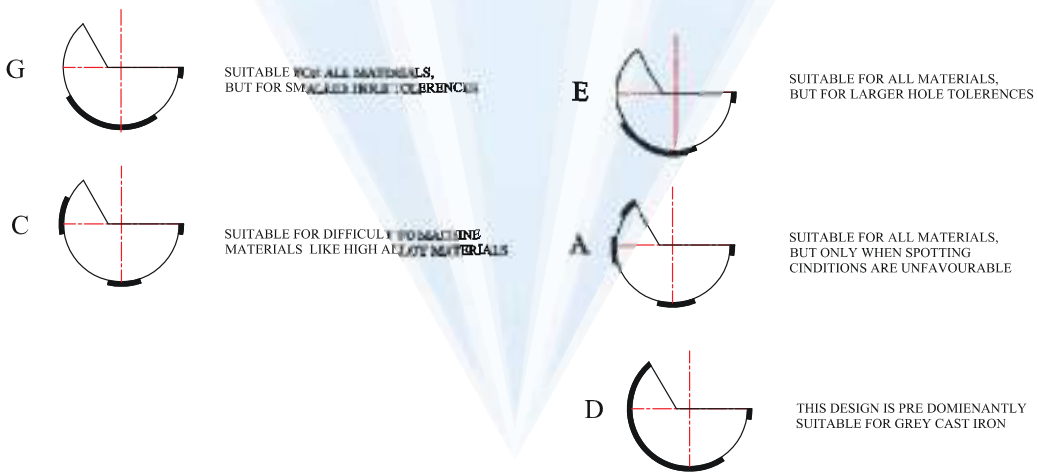
GUNDRILLS

Deep hole drilling on deep hole drilling machines

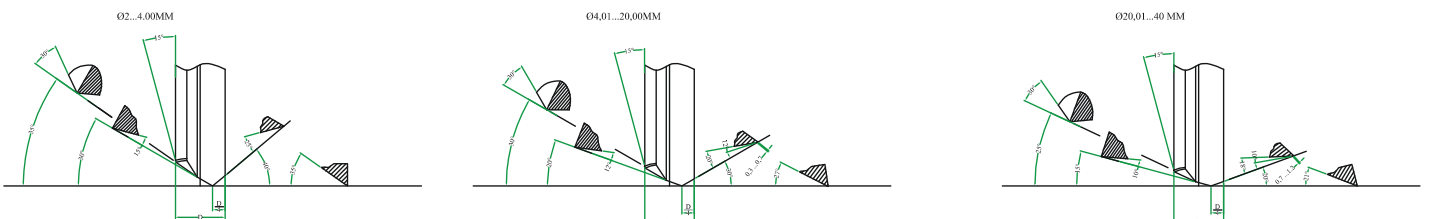


Head forms

(Position of supporting strips)



Standard point grinds (special point grinds available, see page 20)



PCD/ CBN CHIP BREAKER & STANDARD INSERTS

CNGN



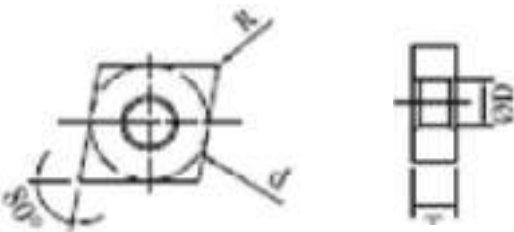
| Type | PCD | | No of Cutting Edges | | | Chip Breaker |
|-------------|----------|--------------|---------------------|---|---|--------------|
| | Standard | Chip Breaker | 1 | 2 | 4 | |
| CNGN 080204 | ✓ | ✓ | 1 | 2 | 4 | |
| CNGN 080208 | ✓ | ✓ | 1 | 2 | 4 | |
| CNGN 080212 | ✓ | ✓ | 1 | 2 | 4 | |
| CNGN 090304 | ✓ | ✓ | 1 | 2 | 4 | ✓ |
| CNGN 090308 | ✓ | ✓ | 1 | 2 | 4 | ✓ |
| CNGN 090312 | ✓ | ✓ | 1 | 2 | 4 | ✓ |
| CNGN 120404 | ✓ | ✓ | 1 | 2 | 4 | ✓ |
| CNGN 120408 | ✓ | ✓ | 1 | 2 | 4 | ✓ |
| CNGN 120412 | ✓ | ✓ | 1 | 2 | 4 | ✓ |

CCGW



| Type | PCD | | CBN | | | |
|-------------|----------|--------------|---------------|---|--|--------------|
| | Standard | Chip Breaker | No of Cutting | | | Chip Breaker |
| CCGW 060202 | ✓ | | 1 | 2 | | |
| CCGW 060204 | ✓ | | 1 | 2 | | |
| CCGW 060208 | ✓ | | 1 | 2 | | |
| CCGW 090304 | ✓ | ✓ | 1 | 2 | | ✓ |
| CCGW 090308 | ✓ | ✓ | 1 | 2 | | ✓ |
| CCGW 090312 | ✓ | ✓ | 1 | 2 | | ✓ |
| CCGW 09T302 | ✓ | ✓ | 1 | 2 | | ✓ |
| CCGW 09T304 | ✓ | ✓ | 1 | 2 | | ✓ |
| CCGW 09T306 | ✓ | ✓ | 1 | 2 | | ✓ |
| CCGW 120404 | ✓ | ✓ | 1 | 2 | | ✓ |
| CCGW 120408 | ✓ | ✓ | 1 | 2 | | ✓ |
| CCGW 120412 | ✓ | ✓ | 1 | 2 | | ✓ |

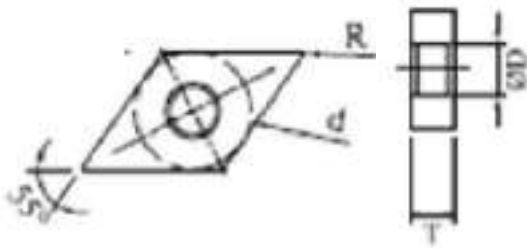
CNGA



| Type | PCD | | CBN | | | |
|-------------|----------|--------------|---------------|---|---|--------------|
| | Standard | Chip Breaker | No of Cutting | | | Chip Breaker |
| CNGA 090304 | ✓ | ✓ | 1 | 2 | 4 | ✓ |
| CNGA 090308 | ✓ | ✓ | 1 | 2 | 4 | ✓ |
| CNGA 090312 | ✓ | ✓ | 1 | 2 | 4 | ✓ |
| CNGA 090404 | ✓ | ✓ | 1 | 2 | 4 | ✓ |
| CNGA 090408 | ✓ | ✓ | 1 | 2 | 4 | ✓ |
| CNGA 090412 | ✓ | ✓ | 1 | 2 | 4 | ✓ |
| CNGA 120404 | ✓ | ✓ | 1 | 2 | 4 | ✓ |
| CNGA 120408 | ✓ | ✓ | 1 | 2 | 4 | ✓ |
| CNGA 120412 | ✓ | ✓ | 1 | 2 | 4 | ✓ |

PCD/ CBN CHIP BREAKER & STANDARD INSERTS

DNGA



| Type | PCD | | CBN | | | |
|-------------|----------|--------------|---------------|---|--------------|---|
| | Standard | Chip Breaker | No of Cutting | | Chip Breaker | |
| DNGA 110404 | ✓ | ✓ | 1 | 2 | 4 | ✓ |
| DNGA 110408 | ✓ | ✓ | 1 | 2 | 4 | ✓ |
| DNGA 110412 | ✓ | ✓ | 1 | 2 | 4 | ✓ |
| DNGA 150404 | ✓ | ✓ | 1 | 2 | 4 | ✓ |
| DNGA 150408 | ✓ | ✓ | 1 | 2 | 4 | ✓ |
| DNGA 150412 | ✓ | ✓ | 1 | 2 | 4 | ✓ |
| DNGA 150604 | ✓ | ✓ | 1 | 2 | 4 | ✓ |
| DNGA 150608 | ✓ | ✓ | 1 | 2 | 4 | ✓ |
| DNGA 150612 | ✓ | ✓ | 1 | 2 | 4 | ✓ |

DCGW



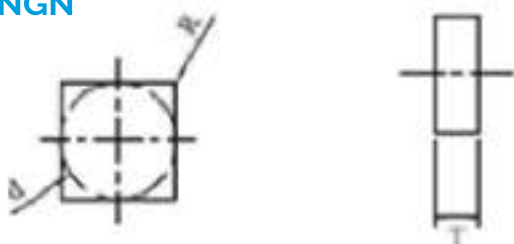
| Type | PCD | | CBN | | | |
|-------------|----------|--------------|---------------|---|--------------|---|
| | Standard | Chip Breaker | No of Cutting | | Chip Breaker | |
| DCGW 070202 | ✓ | ✓ | 1 | 2 | | |
| DCGW 070204 | ✓ | ✓ | 1 | 2 | | |
| DCGW 070208 | ✓ | ✓ | 1 | 2 | | |
| DCGW 11T302 | ✓ | ✓ | 1 | 2 | | ✓ |
| DCGW 11T304 | ✓ | ✓ | 1 | 2 | | ✓ |
| DCGW 11T308 | ✓ | ✓ | 1 | 2 | | ✓ |
| DCGW 11T312 | ✓ | ✓ | 1 | 2 | | ✓ |

SNGA



| Type | PCD | | CBN | | | | |
|-------------|----------|--------------|---------------|---|--------------|---|---|
| | Standard | Chip Breaker | No of Cutting | | Chip Breaker | | |
| SNGA 090304 | ✓ | ✓ | 1 | 2 | 4 | 8 | ✓ |
| SNGA 090308 | ✓ | ✓ | 1 | 2 | 4 | 8 | ✓ |
| SNGA 090312 | ✓ | ✓ | 1 | 2 | 4 | 8 | ✓ |
| SNGA 120404 | ✓ | ✓ | 1 | 2 | 4 | 8 | ✓ |
| SNGA 120408 | ✓ | ✓ | 1 | 2 | 4 | 8 | ✓ |
| SNGA 120412 | ✓ | ✓ | 1 | 2 | 4 | 8 | ✓ |

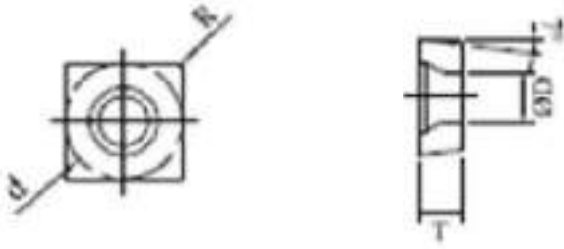
SNGN



| Type | PCD | | CBN | | | | |
|-------------|----------|--------------|---------------|---|--------------|--|---|
| | Standard | Chip Breaker | No of Cutting | | Chip Breaker | | |
| SNGN 120404 | ✓ | ✓ | 1 | 2 | 4 | | ✓ |
| SNGN 120408 | ✓ | ✓ | 1 | 2 | 4 | | ✓ |
| SNGN 120412 | ✓ | ✓ | 1 | 2 | 4 | | ✓ |

PCD/ CBN CHIP BREAKER & STANDARD INSERTS

SCGW



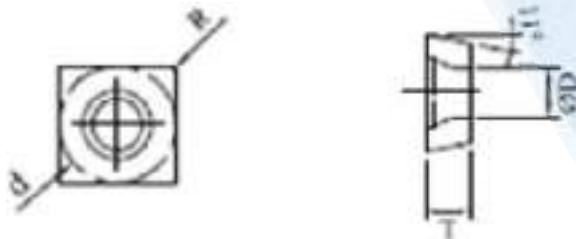
| Type | PCD | | CBN | | | |
|-------------|----------|--------------|---------------|---|---|--------------|
| | Standard | Chip Breaker | No of Cutting | | | Chip Breaker |
| SCGW 090304 | ✓ | ✓ | 1 | 2 | 4 | ✓ |
| SCGW 090308 | ✓ | ✓ | 1 | 2 | 4 | ✓ |
| SCGW 090312 | ✓ | ✓ | 1 | 2 | 4 | ✓ |
| SCGW 09T304 | ✓ | ✓ | 1 | 2 | 4 | ✓ |
| SCGW 09T308 | ✓ | ✓ | 1 | 2 | 4 | ✓ |
| SCGW 09T312 | ✓ | ✓ | 1 | 2 | 4 | ✓ |
| SCGW 120402 | ✓ | ✓ | 1 | 2 | 4 | ✓ |
| SCGW 120404 | ✓ | ✓ | 1 | 2 | 4 | ✓ |
| SCGW 120408 | ✓ | ✓ | 1 | 2 | 4 | ✓ |

SPGN



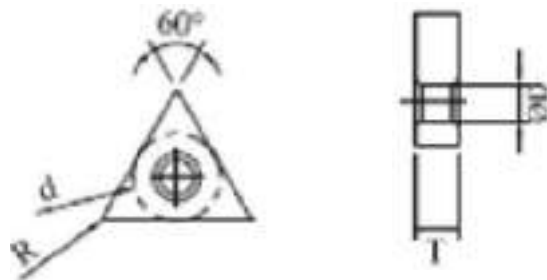
| Type | PCD | | CBN | | | |
|-------------|----------|--------------|---------------|---|---|--------------|
| | Standard | Chip Breaker | No of Cutting | | | Chip Breaker |
| SPGN 090304 | ✓ | ✓ | 1 | 2 | 4 | ✓ |
| SPGN 090308 | ✓ | ✓ | 1 | 2 | 4 | ✓ |
| SPGN 120304 | ✓ | ✓ | 1 | 2 | 4 | ✓ |
| SPGN 120308 | ✓ | ✓ | 1 | 2 | 4 | ✓ |

SPGW



| Type | PCD | | CBN | | | |
|-------------|----------|--------------|---------------|---|---|--------------|
| | Standard | Chip Breaker | No of Cutting | | | Chip Breaker |
| SPGW 090302 | ✓ | ✓ | 1 | 2 | 4 | ✓ |
| SPGW 090304 | ✓ | ✓ | 1 | 2 | 4 | ✓ |
| SPGW 090308 | ✓ | ✓ | 1 | 2 | 4 | ✓ |
| SPGW 09T304 | ✓ | ✓ | 1 | 2 | 4 | ✓ |
| SPGW 09T308 | ✓ | ✓ | 1 | 2 | 4 | ✓ |
| SPGW 09T312 | ✓ | ✓ | 1 | 2 | 4 | ✓ |
| SPGW 120404 | ✓ | ✓ | 1 | 2 | 4 | ✓ |
| SPGW 120408 | ✓ | ✓ | 1 | 2 | 4 | ✓ |
| SPGW 120412 | ✓ | ✓ | 1 | 2 | 4 | ✓ |

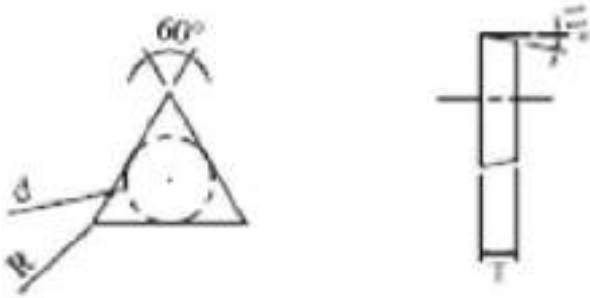
TNGA



| Type | PCD | | CBN | | | |
|-------------|----------|--------------|---------------|---|---|--------------|
| | Standard | Chip Breaker | No of Cutting | | | Chip Breaker |
| TNGA 160404 | ✓ | ✓ | 1 | 3 | 6 | ✓ |
| TNGA 160408 | ✓ | ✓ | 1 | 3 | 6 | ✓ |
| TNGA 160412 | ✓ | ✓ | 1 | 3 | 6 | ✓ |
| TNGA 220404 | ✓ | ✓ | 1 | 3 | 6 | ✓ |
| TNGA 220408 | ✓ | ✓ | 1 | 3 | 6 | ✓ |
| TNGA 220412 | ✓ | ✓ | 1 | 3 | 6 | ✓ |
| TNGA 220416 | ✓ | ✓ | 1 | 3 | 6 | ✓ |

PCD/ CBN CHIP BREAKER & STANDARD INSERTS

TPGN



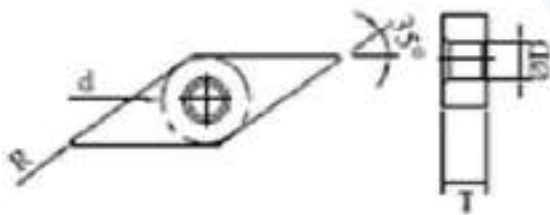
| Type | PCD | | CBN | | | |
|-------------|----------|--------------|---------------|---|--------------|---|
| | Standard | Chip Breaker | No of Cutting | | Chip Breaker | |
| TPGN 160302 | ✓ | ✓ | 1 | 3 | | ✓ |
| TPGN 160304 | ✓ | ✓ | 1 | 3 | | ✓ |
| TPGN 160308 | ✓ | ✓ | 1 | 3 | | ✓ |
| TPGN 220404 | ✓ | ✓ | 1 | 3 | | ✓ |
| TPGN 220408 | ✓ | ✓ | 1 | 3 | | ✓ |
| TPGN 220412 | ✓ | ✓ | 1 | 3 | | ✓ |
| TPGN 220416 | ✓ | ✓ | 1 | 3 | | ✓ |

TPGW



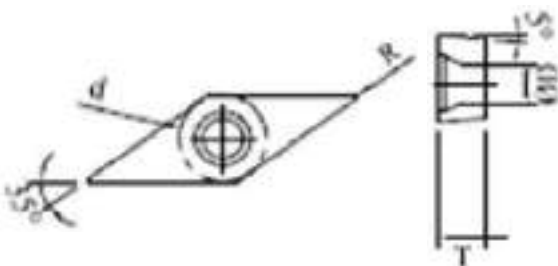
| Type | PCD | | CBN | | | |
|-------------|----------|--------------|---------------|---|--------------|---|
| | Standard | Chip Breaker | No of Cutting | | Chip Breaker | |
| TPGW 080202 | ✓ | | 1 | | | |
| TPGW 080204 | ✓ | | 1 | | | |
| TPGW 080208 | ✓ | | 1 | | | |
| TPGW 090202 | ✓ | ✓ | 1 | 3 | | |
| TPGW 090204 | ✓ | ✓ | 1 | 3 | | |
| TPGW 090208 | ✓ | ✓ | 1 | 3 | | |
| TPGW 110202 | ✓ | ✓ | 1 | 3 | | ✓ |
| TPGW 110204 | ✓ | ✓ | 1 | 3 | | ✓ |
| TPGW 110208 | ✓ | ✓ | 1 | 3 | | ✓ |
| TPGW 110302 | ✓ | ✓ | 1 | 3 | | ✓ |
| TPGW 110304 | ✓ | ✓ | 1 | 3 | | ✓ |

VNGA



| Type | PCD | | CBN | | | |
|-------------|----------|--------------|---------------|---|--------------|---|
| | Standard | Chip Breaker | No of Cutting | | Chip Breaker | |
| VNGA 160402 | ✓ | ✓ | 1 | 2 | 4 | ✓ |
| VNGA 160404 | ✓ | ✓ | 1 | 2 | 4 | ✓ |
| VNGA 160408 | ✓ | ✓ | 1 | 2 | 4 | ✓ |
| VNGA 160412 | ✓ | ✓ | 1 | 2 | 4 | ✓ |

VBGW



| Type | PCD | | CBN | | | |
|-------------|----------|--------------|---------------|---|--------------|---|
| | Standard | Chip Breaker | No of Cutting | | Chip Breaker | |
| VBGW 110302 | ✓ | ✓ | 1 | 2 | | |
| VBGW 110304 | ✓ | ✓ | 1 | 2 | | |
| VBGW 110308 | ✓ | ✓ | 1 | 2 | | |
| VBGW 160402 | ✓ | ✓ | 1 | 2 | | ✓ |
| VBGW 160404 | ✓ | ✓ | 1 | 2 | | ✓ |
| VBGW 160408 | ✓ | ✓ | 1 | 2 | | ✓ |
| VBGW 160410 | ✓ | ✓ | 1 | 2 | | ✓ |
| VBGW 160412 | ✓ | ✓ | 1 | 2 | | ✓ |
| VBGW 160416 | ✓ | ✓ | 1 | 2 | | ✓ |



MANAR

TOOLS PVT. LTD.

AN ISO 9001 : 2015 CERTIFIED COMPANY



“Shaping The Tools That Shape Our Today And Tomorrow”

MANAR TOOLS PVT LTD



Office & Works : Plot. No 78 3rd
Floor Anant Enterprises, T-block
Midc Bhosari Pune- 411026
Maharastra, India



020 46701133
+91 7447445361 | +91 9075025803



Manufacturing Unit : Plot No.04 Chordia Industrial Park, Sangvi
Central, Tal-khandala , Dist- Satara-412801. Maharastra, India



www.manartools.com | www.manartools.in



customercare@manartools.com

